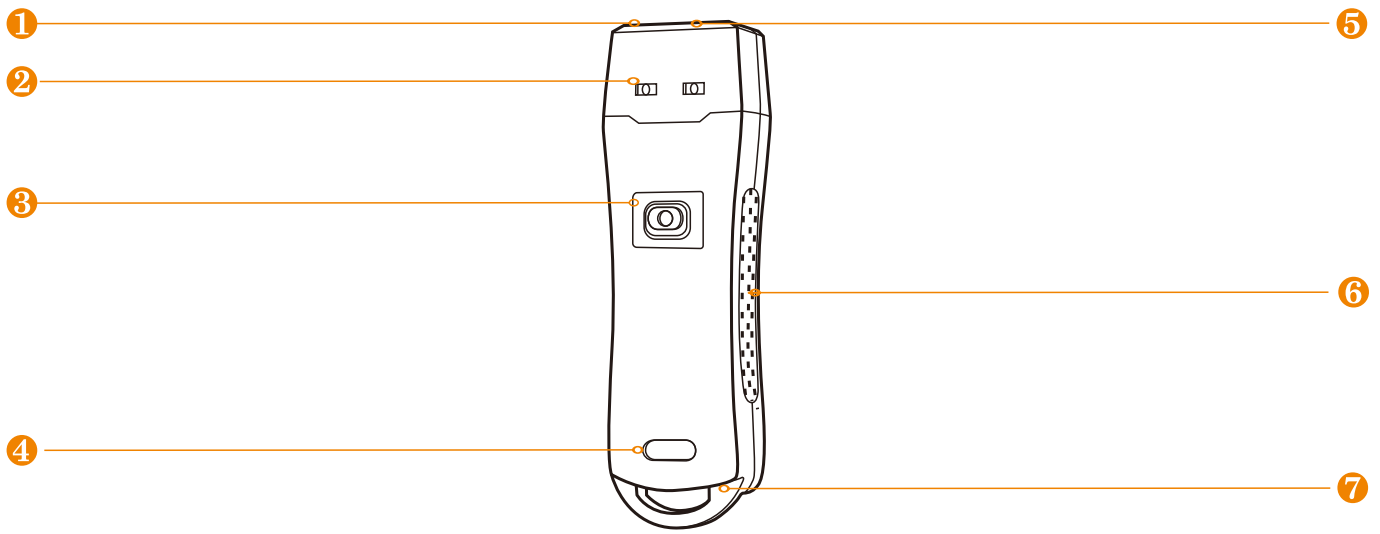




*Find Out Who Your Guard's Been Destroying Device!*

**LIGHTING GUARD TOUR SOLUTION**   
PROFESSIONAL MANUFACTURER SINCE 2006



- ① Sensor area
- ③ Switch
- ⑤ Torch
- ⑦ USB port

- ② LED indicator
- ④ Label Area
- ⑥ Anti-slide area

## Benefits



### RFID Reading

Through the 125Khz frequency reading the tag, unnecessary to direct touching the checkpoint via Equipment.



### Lighting Extension

A reliable flashlight can save you from any situation where you need light.



### Impact Records

Impact record is a timing when employee beating the equipment, once generated will be permanently stored, administrator can follow this in apportioning blame.



### Real Time Data

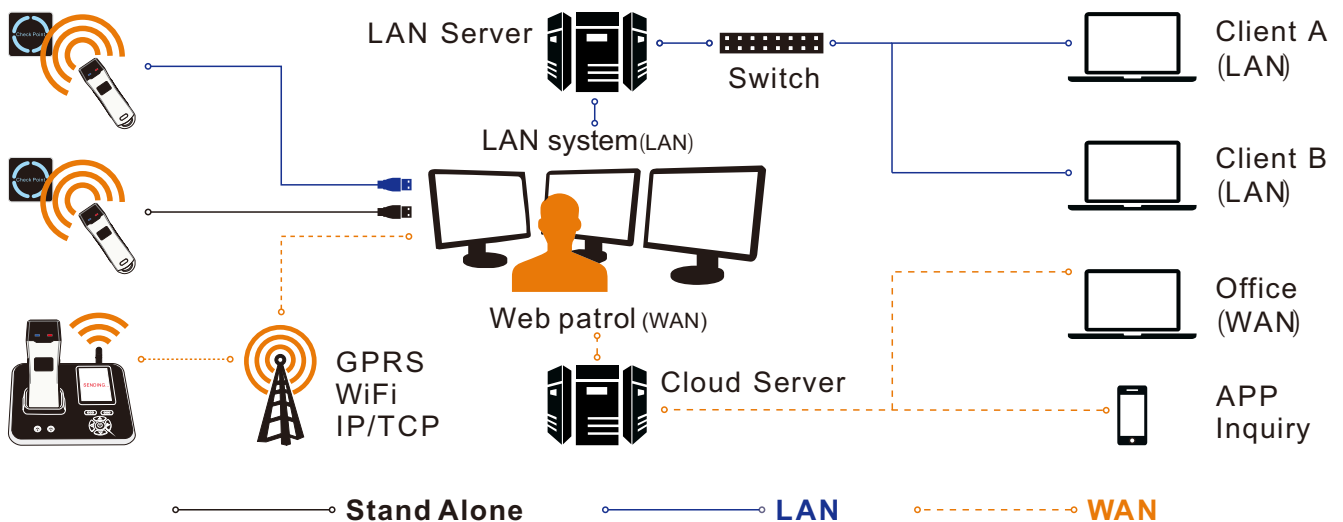
This function have to use with Z-9200 communication station, the offline data can be delivered to the software in real time through z-9200, currently supports Wi-Fi, GPRS and TCP/IP

## Technical Parameters

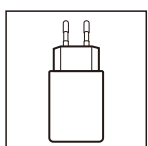
|                      |   |
|----------------------|---|
| Model                | Z-6200E   |
| Lighting mode        | Low, Medium, Strong, strobe and SOS                         |
| Reading technology   | Read 125kHz EM(ID) tags proximity                           |
| Material             | Aluminum alloy  |
| Storage              | 80,000 pieces   |
| Impact record        | 32,000 pieces   |
| Workable temperature | -20 to 70 °C  |
| Workable humidity    | 30% to 90%  |
| Communication        | USB cable   |
| Battery              | 3.7v built-in rechargeable li-ion battery                   |
| Prompt               | LED + Vibration   |
| Standard accessories | Data cable, safety protective cover, charger plug, software |
| Baud rate            | 115200 bps  |
| Performance          | IP 67, waterproof, shockproof                               |
| Dimension            | 130mm x 40mm x25mm  |
| Net weight           | 170g  |

\*Real-time solution for offline reader please reference to E-catalog of Z-9200 internet communication station

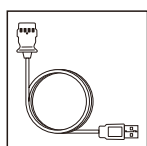
## Working Map



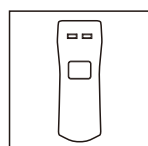
## Content



Charger



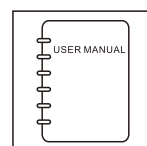
USB cable



Case



Software



Manual